

# **HOOVER®**

**INSTRUCTIONS AND WARRANTY**



**MODEL: H84-18MB-ZA**

**HOOVER HANDHELD 18.5V VACUUM**

Congratulations on purchasing our Hoover 18.5V Handheld Vacuum. Each unit is manufactured to ensure safety and reliability. Before using this appliance for the first time, please read the instruction manual carefully and keep it for future reference.

## **FEATURES OF THE HOOVER 18.5V HANDHELD VACUUM**

- 18.5V LITHIUM BATTERY
- Dry cordless operation
- Operating Time 18 min
- Charging time: 6-7 hours
- Charging indicator
- Dual speed control
- Charging & discharging battery protection
- Accessories:
  - Crevice tool
  - Motorized brush
  - Charging wall mount

## **IMPORTANT SAFEGUARDS**

1. When using any electrical appliance, basic safety precautions should always be followed including the following:
  1. Please read the instructions carefully before using any appliance.
  2. Always ensure that the voltage on the rating label corresponds to the mains voltage in your home.
  3. Incorrect operation and improper use can damage the appliance and cause injury to the user.
  4. The appliance is intended for household use only. Commercial use invalidates the warranty and the supplier cannot be held responsible for injury or damage caused when using the appliance for any other purpose than that intended.
  5. Avoid any contact with moving parts.
  6. This appliance is not intended for use by persons (including children) with reduced physical, sensory or mental capabilities, or lack of experience and knowledge, unless they have been given supervision or instruction concerning use of the appliance by a person responsible for their safety.
  7. Children should be supervised to ensure that they do not play with the appliance.

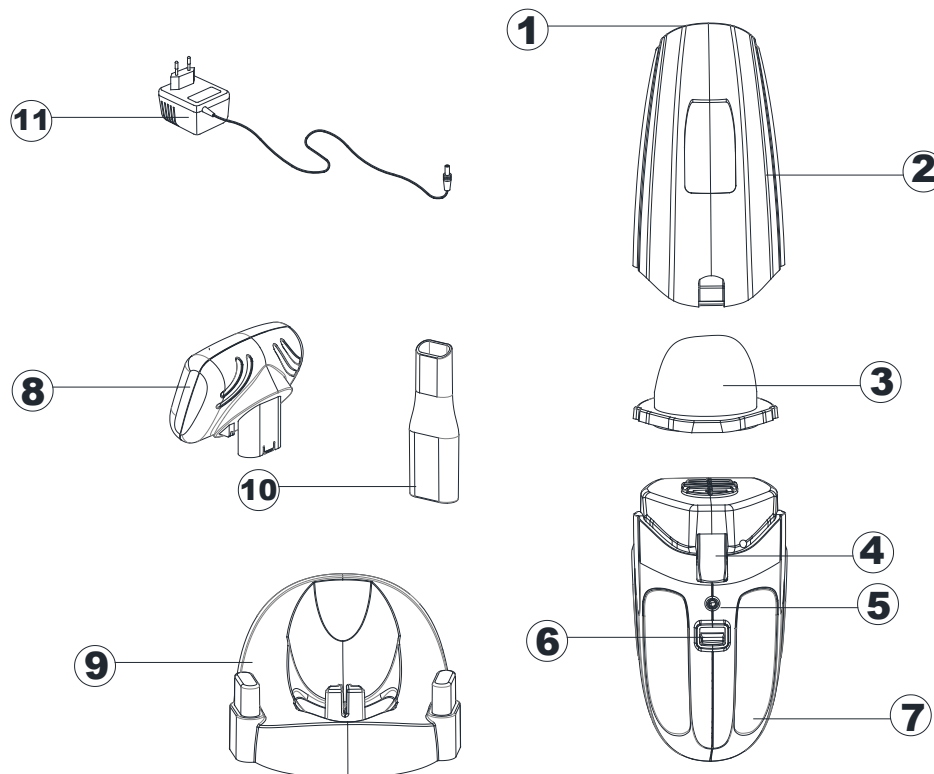
8. Check the power cord and plug regularly for any damage. If the cord or the plug is damaged, it must be replaced by the manufacturer or a qualified person in order to avoid an electrical hazard.
9. Do not use the appliance if it has been dropped or damaged in any way. In case of damage, take the unit in for examination and/or repair by an authorised service agent.
10. To reduce the risk of electric shock, do not immerse or expose the motor assembly, plug or the power cord to water or any other liquid.
11. Never immerse the full unit in water or any other liquid for cleaning purposes.
12. Remove the plug from the socket by gripping the plug. Do not pull on the cord to disconnect the appliance from the mains. Always unplug the unit when not in use, before cleaning or when adding or removing parts.
13. The use of accessory attachments that are not recommended or supplied by the manufacturer may result in injuries, fire or electric shock.
14. A short cord is provided to reduce the hazards resulting from becoming entangled in or tripping over a longer cord.
15. Do not let the cord hang over the edge of a table or counter. Ensure that the cord is not in a position where it can be pulled on inadvertently.
16. Do not allow the cord to touch hot surfaces and do not place on or near a hot gas or electric burner or in a heated oven.
17. Do not use the appliance on a gas or electric cooking top or over or near an open flame.
18. Use of an extension cord with this appliance is not recommended. However, if it is necessary to use an extension lead, ensure that the lead is suited to the power consumption of the appliance to avoid overheating of the extension cord, appliance or plug point. Do not place the extension cord in a position where it can be pulled on by children or animals or tripped over.
19. This appliance is not suitable for outdoor use. Do not use this appliance for anything other than its intended use.
20. DO NOT carry the appliance by the power cord.
21. Do not leave this appliance unattended during use. Always unplug the unit when not in use or before cleaning.
22. Always operate the appliance on a smooth, even, stable surface. Do not place the unit on a hot surface.
23. Ensure that the switch is in the "Off" position after each use.
24. The manufacturer does not accept responsibility for any damage or injury caused by improper or incorrect use, or for repairs carried out by unauthorised personnel.

25. In case of technical problems, switch off the machine and do not attempt to repair it yourself. Return the appliance to an authorised service facility for examination, adjustment or repair. Always insist on the use of original spare parts. Failure to comply with the above mentioned pre-cautions and instructions, could affect the safe operation of this machine.
26. Do not operate the unit with wet hands or without shoes.
27. Do not place objects into any openings.
28. Do not operate if any openings are blocked
29. Keep unit free from dust, lint, hair and anything else that may reduce the airflow.
30. This vacuum cleaner creates suction and contains a revolving brush roll, as such, hair, loose clothing, fingers and other body parts should be kept away from any openings or moving parts
31. Do not use the unit to pick up any burning, smoking or flammable objects such as cigarettes, matches or hot ash.
32. Do not use the unit to pick up flammable or combustible liquids such as gasoline or use the unit in areas where these liquids are present.
33. Do not use the unit without the dust cap or filter in place.

**IMPORTANT NOTE:** The motor of the unit needs to be switched off for 1 minute after 15 minutes of consecutive use. This is to allow the motor to cool down and prevent motor failure. Do not operate this unit for more than 4 hours (with cool down periods included) on any given day. Also ensure that the product is cleaned on a regular basis and or after each use.

## PARTS DIAGRAM

- 1 Air intake nozzle
- 2 Dust Cup Container
- 3 Dust Cup Filter
- 4 Dust Cup Release Button
- 5 Charging Indicator Light
- 6 O/Off Switch
- 7 Motor Housing
- 8 Motorized Brush
- 9 Charging Stand
- 10 Crevice Tool
- 11 Charging Adapter



## ASSEMBLING THE CHARGING BASE

- Insert the charge adapter plug through the hole in the underside of the charging base / wall mounting bracket.
- Turn the charge adapter plug one quarter turn to secure it into place.

## **CHARGING YOUR HAND VACUUM**

- Plug the charger into the wall outlet. Place the unit in the charging base. The charging indicator light will illuminate to show that the vacuum is being charged.
- Before first using the hand vacuum, make sure that the switch is in the “Off” position and charge until the indicator light turns OFF, max. 6 hours.
- After the initial charge, discharge the battery fully and charge until the indicator light turns OFF, max. 6 hours.

## **MAXIMIZING THE LIFE OF YOUR LITHIUM-ION BATTERY**

- Do not store the unit with the charging adapter attached and plugged in.
- Do not store in areas of high temperature or humidity.
- Use only the charger supplied with the product. If other chargers are used, the batteries can fail causing damage to the battery, product or personal property.
- After 3 months of non-use, the product should be fully discharged and then recharged to maximize battery power.
- If the product has never been used or has been stored for an extended period of time without use - it will take several complete charge and discharge cycles to realize the full operational time of your product.

## **ASSEMBLY OF THE HAND VACUUM**

**IMPORTANT:** The dust cup filter must always be in place when operating the hand vacuum.

- Push the dust cup release button and remove the dust cup.
- Verify that the dust cup filter is inside, then reattach the dust cup to the hand vacuum.
- The motorized brush can be used to vacuum short pile carpets or rugs. To attach the motorized brush, make sure the switch is in the Off position. Then firmly insert the motorized brush into the air-intake nozzle, ensuring that the contact pins are engaged in the connector slots of the unit.

**WARNING:** Do not touch the motorized brush while it is in motion.

- The crevice tool can be used to clean narrow, hard to reach places. The dusting brush is used for the furniture, venetian blinds, books, lamp shades and shelves. Attach the desired attachment by pushing it into the air-intake nozzle.

## **USING THE CORDLESS VACUUM**

**CAUTION:** The air-intake nozzle and attachments must be free of obstructions at all times, otherwise the motor will overheat and could become damaged.

- To start the vacuum, push the switch to the “On” position.
- To turn the vacuum “Off”, push the switch to the “Off” position.

## **CHANGING & CLEANING THE DUST CUP FILTER**

**NOTE:** It is recommended that the dust cup filter be replaced every 6 - 9 months to ensure peak performance of the vacuum.

- Press the dust cup release button and pull out the dust cup.
- Carefully remove the dust cup filter and empty the dust from the dust cup.
- Rinse the dust cup filter in cold water and let it dry completely before replacing back into the dust cup. Do not wash it in a washing machine or use a hair dryer to dry it. Air dry only!

## **CHARGING BASE / WALL MOUNTING BRACKET**

- If you wish to mount the charging base onto a wall, make sure that the intended wall area that is to be drilled is free from any hidden electrical wires, water pipes and gas lines.
- Select an appropriate place that is close to an electrical outlet. Do not mount near direct sunlight, near a heat source or outdoors.
- Select an appropriate drill type for the material to be drilled.
- Carefully measure and mark the location of all bracket holes and then drill holes and screw the charging base / wall mounting bracket onto the wall. (Screws not included.)

## **BATTERY PACK REPLACEMENT & DISPOSAL**

The cordless hand vacuum is powered by Lithium-ion batteries, which must be recycled or disposed of properly in accordance with state, federal and local laws. If uncertain as to how to remove the battery pack, we suggest that you take your hand vacuum to a reputable small appliance service technician to have this service performed. Do not attempt to replace the batteries used in this product with any other type of battery. Follow these steps when replacement of the battery pack is required:

- Using a screwdriver, remove the single screw securing the battery compartment cover located underneath the unit.
- To remove the cover, lift up the battery compartment cover. Never open the battery compartment except to replace the battery pack. Set the cover and the screw aside.
- Slide the battery strap over and lift it out.
- Carefully lift out the battery pack and disconnect the terminals.
- Connect the terminals to the battery pack taking care to connect the black lead (-) to the negative connector first and the red lead (+) to the positive connector second.
- Insert the new battery inside the battery compartment.
- Take care to tuck the wiring completely in so that the wiring does not interfere with the battery compartment cover when it is replaced.
- Replace the battery strap, the battery compartment cover and the screw making sure not to over-tighten the screw

## **CAUTION:**

- **Use only with the battery pack supplied.**
- **Do not attempt to remove the battery pack from the unit to charge.**
- **Never throw the battery pack or the appliance into a fire or incinerate it.**
- **Do not remove or damage the battery casing.**
- **Do not place the batteries on metal surfaces.**
- **Do not touch metal parts of the batteries together as the batteries will overheat.**

**PLEASE AFFIX YOUR PROOF OF PURCHASE/RECEIPT HERE**

**IN THE EVENT OF A CLAIM UNDER WARRANTY THIS RECEIPT MUST BE PRODUCED.**

### **WARRANTY**

1. Home of Living Brands (Pty) Limited (“Home of Living Brands”) warrants to the original purchaser of this product (“the customer”) that this product will be free of defects in quality and workmanship which under normal personal, family or household use and purpose may manifest within a period of 1 (one) year from the date of purchase (“warranty period”).
2. Where the customer has purchased a product and it breaks, is defective or does not work properly for the intended purpose, the customer must notify the supplier from whom the customer bought the product (“the supplier”) thereof within the warranty period. Any claim in terms of this warranty must be supported by a proof of purchase. If proof of purchase is not available, then repair, and/or service charges may be payable by the customer to the supplier.
3. The faulty product must be taken to the supplier's service centre to exercise the warranty.
4. The supplier will refund, repair or exchange the product in terms of this warranty subject to legislative requirements. This warranty shall be valid only where the customer has not broken the product himself, or used the product for something that it is not supposed to be used for. The warranty does not include and will not be construed to cover products damaged as a result of disaster, misuse, tamper, abuse or any unauthorised modification or repair of the product.
5. This warranty will extend only to the product provided at the date of the purchase and not to any expendables attached or installed by the customer.
6. If the customer requests that the supplier repairs the product and the product breaks or fails to work properly within 3 (three) months of the repair and not as a result of misuse, tampering or modification by or on behalf of the customer, then the supplier may replace the product or pay a refund to the customer.
7. The customer may be responsible for certain costs where products returned are not in the original packaging, or if the packaging is damaged. This will be deducted from any refund paid to the customer.

### **HOME OF LIVING BRANDS (PTY) LTD (JOHANNESBURG)**

NATIONAL CONTACT

TEL NO. (087) 245-0029

DURBAN

TEL NO. (031) 303-1163

[www.homeoflivingbrands.com](http://www.homeoflivingbrands.com)

[www.hooversa.co.za](http://www.hooversa.co.za)